

Bb INSTRUMENTS

NATURAL MINOR SCALES

a minor

d minor

e minor

g minor

b minor

c minor

f# minor

f minor

c# minor

bb minor

g# minor

d# minor

HARMONIC MINOR SCALES

a minor

Ascending: A4, B4, C5, D5, E5, F#5, G5, A5. Descending: A5, G5, F#5, E5, D5, C5, B4, A4. Trills: A5-B4, G5-F#5, E5-D5, C5-B4.

d minor

Ascending: D4, E4, F4, G4, A4, B4, C5, D5. Descending: D5, C5, B4, A4, G4, F4, E4, D4. Trills: D5-C5, B4-A4, G4-F4, E4-D4.

e minor

Ascending: E4, F4, G4, A4, B4, C5, D5, E5. Descending: E5, D5, C5, B4, A4, G4, F4, E4. Trills: E5-D5, C5-B4, A4-G4, F4-E4.

g minor

Ascending: G3, A3, B3, C4, D4, E4, F#4, G4. Descending: G4, F#4, E4, D4, C4, B3, A3, G3. Trills: G4-F#4, E4-D4, C4-B3, A3-G3.

b minor

Ascending: B3, C4, D4, E4, F#4, G4, A4, B4. Descending: B4, A4, G4, F#4, E4, D4, C4, B3. Trills: B4-A4, G4-F#4, E4-D4, C4-B3.

c minor

Ascending: C4, D4, E4, F4, G4, A4, B4, C5. Descending: C5, B4, A4, G4, F4, E4, D4, C4. Trills: C5-B4, A4-G4, F4-E4, D4-C4.

f# minor

Ascending: F#3, G#3, A#3, B4, C5, D5, E5, F#5. Descending: F#5, E5, D5, C5, B4, A#3, G#3, F#3. Trills: F#5-E5, D5-C5, B4-A#3, G#3-F#3.

f minor

Ascending: F3, G3, A3, B3, C4, D4, E4, F4. Descending: F4, E4, D4, C4, B3, A3, G3, F3. Trills: F4-E4, D4-C4, B3-A3, G3-F3.

c# minor

Ascending: C#3, D#3, E#3, F#4, G#4, A#4, B4, C#5. Descending: C#5, B4, A#4, G#4, F#4, E#3, D#3, C#3. Trills: C#5-B4, A#4-G#4, F#4-E#3, D#3-C#3.

bb minor

Ascending: Bb3, Cb4, Db4, Eb4, Fb4, Gb4, Ab4, Bb4. Descending: Bb4, Ab4, Gb4, Fb4, Eb4, Db4, Cb4, Bb3. Trills: Bb4-Ab4, Gb4-Fb4, Eb4-Db4, Cb4-Bb3.

g# minor

Ascending: G#3, A#3, B#3, C#4, D#4, E#4, F#4, G#4. Descending: G#4, F#4, E#4, D#4, C#4, B#3, A#3, G#3. Trills: G#4-F#4, E#4-D#4, C#4-B#3, A#3-G#3.

d# minor

Ascending: D#3, E#3, F#3, G#3, A#3, B#3, C#4, D#4. Descending: D#4, C#4, B#3, A#3, G#3, F#3, E#3, D#3. Trills: D#4-C#4, B#3-A#3, G#3-F#3, E#3-D#3.

MELODIC MINOR SCALES

a minor

d minor

e minor

g minor

b minor

c minor

f# minor

f minor

c# minor

bb minor

g# minor

d# minor

Eb INSTRUMENTS

NATURAL MINOR SCALES

a minor

d minor

e minor

g minor

b minor

c minor

f# minor

f minor

c# minor

bb minor

g# minor

d# minor

HARMONIC MINOR SCALES

a minor

d minor

e minor

g minor

b minor

c minor

f# minor

f minor

c# minor

b♭ minor

g# minor

d# minor

MELODIC MINOR SCALES

a minor

d minor

e minor

g minor

b minor

c minor

f# minor

f minor

c# minor

b♭ minor

g# minor

d# minor

NATURAL MINOR SCALESBASS CLEF
BARITONE/TROMBONE

a minor

d minor

e minor

g minor

b minor

c minor

f# minor

f minor

c# minor

b# minor

g# minor

d# minor

BASS CLEF
BARITONE/TROMBONE

HARMONIC MINOR SCALES

a minor

d minor

e minor

g minor

b minor

c minor

f# minor

f minor

c# minor

bb minor

g# minor

d# minor

BASS CLEF
BARITONE/TROMBONE

MELODIC MINOR SCALES

a minor

d minor

e minor

g minor

b minor

c minor

f# minor

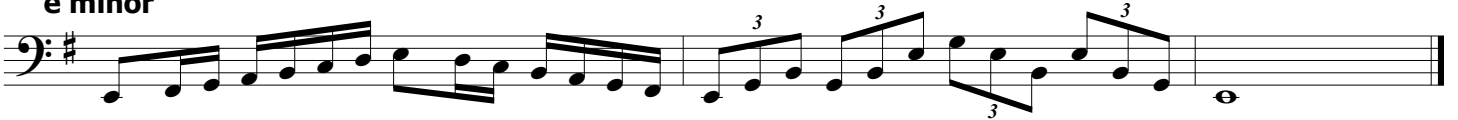
f minor

c# minor

bb minor

g# minor

d# minor

NATURAL MINOR SCALESBASS CLEF
TUBA**a minor****d minor****e minor****g minor****b minor****c minor****f# minor****f minor****c# minor****b b minor****g# minor****d# minor**

BASS CLEF
TUBA

HARMONIC MINOR SCALES

a minor



d minor



e minor



g minor



b minor



c minor



f# minor



f minor



c# minor



bb minor



g# minor



d# minor



BASS CLEF
TUBA

MELODIC MINOR SCALES

a minor

Musical notation for the a minor scale in bass clef. The scale is written in a single line with a bass clef. It consists of eight measures: four ascending and four descending. The notes are A, B, C, D, E, F, G, A. The descending line includes trills (marked with '3') on the notes G, F, and E. The piece ends with a double bar line and a common time signature.

d minor

Musical notation for the d minor scale in bass clef. The scale is written in a single line with a bass clef. It consists of eight measures: four ascending and four descending. The notes are D, E, F, G, A, B, C, D. The descending line includes trills (marked with '3') on the notes C, B, and A. The piece ends with a double bar line and a common time signature.

e minor

Musical notation for the e minor scale in bass clef. The scale is written in a single line with a bass clef. It consists of eight measures: four ascending and four descending. The notes are E, F, G, A, B, C, D, E. The descending line includes trills (marked with '3') on the notes D, C, and B. The piece ends with a double bar line and a common time signature.

g minor

Musical notation for the g minor scale in bass clef. The scale is written in a single line with a bass clef. It consists of eight measures: four ascending and four descending. The notes are G, A, B, C, D, E, F, G. The descending line includes trills (marked with '3') on the notes F, E, and D. The piece ends with a double bar line and a common time signature.

b minor

Musical notation for the b minor scale in bass clef. The scale is written in a single line with a bass clef. It consists of eight measures: four ascending and four descending. The notes are B, C, D, E, F, G, A, B. The descending line includes trills (marked with '3') on the notes A, G, and F. The piece ends with a double bar line and a common time signature.

c minor

Musical notation for the c minor scale in bass clef. The scale is written in a single line with a bass clef. It consists of eight measures: four ascending and four descending. The notes are C, D, E, F, G, A, B, C. The descending line includes trills (marked with '3') on the notes B, A, and G. The piece ends with a double bar line and a common time signature.

f# minor

Musical notation for the f# minor scale in bass clef. The scale is written in a single line with a bass clef. It consists of eight measures: four ascending and four descending. The notes are F#, G, A, B, C, D, E, F#. The descending line includes trills (marked with '3') on the notes E, D, and C. The piece ends with a double bar line and a common time signature.

f minor

Musical notation for the f minor scale in bass clef. The scale is written in a single line with a bass clef. It consists of eight measures: four ascending and four descending. The notes are F, G, A, B, C, D, E, F. The descending line includes trills (marked with '3') on the notes E, D, and C. The piece ends with a double bar line and a common time signature.

c# minor

Musical notation for the c# minor scale in bass clef. The scale is written in a single line with a bass clef. It consists of eight measures: four ascending and four descending. The notes are C#, D, E, F, G, A, B, C#. The descending line includes trills (marked with '3') on the notes B, A, and G. The piece ends with a double bar line and a common time signature.

b# minor

Musical notation for the b# minor scale in bass clef. The scale is written in a single line with a bass clef. It consists of eight measures: four ascending and four descending. The notes are B#, C, D, E, F, G, A, B#. The descending line includes trills (marked with '3') on the notes A, G, and F. The piece ends with a double bar line and a common time signature.

g# minor

Musical notation for the g# minor scale in bass clef. The scale is written in a single line with a bass clef. It consists of eight measures: four ascending and four descending. The notes are G#, A, B, C, D, E, F, G#. The descending line includes trills (marked with '3') on the notes F, E, and D. The piece ends with a double bar line and a common time signature.

d# minor

Musical notation for the d# minor scale in bass clef. The scale is written in a single line with a bass clef. It consists of eight measures: four ascending and four descending. The notes are D#, E, F, G, A, B, C, D#. The descending line includes trills (marked with '3') on the notes C, B, and A. The piece ends with a double bar line and a common time signature.

C INSTRUMENTS

NATURAL MINOR SCALES

a minor

The a minor natural scale is shown on a treble clef staff. It begins with a quarter note on A4, followed by eighth notes for B4, C5, D5, E5, F5, G5, and A5. The descending part starts with a quarter note on G4, followed by eighth notes for F4, E4, D4, C4, B3, A3, and G3. The final three notes (G3, F3, E3) are grouped as triplets.

d minor

The d minor natural scale is shown on a treble clef staff with a key signature of two flats. It begins with a quarter note on D4, followed by eighth notes for E4, F4, G4, A4, B4, C5, and D5. The descending part starts with a quarter note on C4, followed by eighth notes for B3, A3, G3, F3, E3, D3, and C2. The final three notes (C2, B1, A1) are grouped as triplets.

e minor

The e minor natural scale is shown on a treble clef staff with a key signature of one sharp. It begins with a quarter note on E4, followed by eighth notes for F4, G4, A4, B4, C5, D5, and E5. The descending part starts with a quarter note on D4, followed by eighth notes for C4, B3, A3, G3, F3, E3, and D3. The final three notes (D3, C3, B2) are grouped as triplets.

g minor

The g minor natural scale is shown on a treble clef staff with a key signature of two flats. It begins with a quarter note on G4, followed by eighth notes for A4, B4, C5, D5, E5, F5, and G5. The descending part starts with a quarter note on F4, followed by eighth notes for E4, D4, C4, B3, A3, G3, and F3. The final three notes (F3, E3, D3) are grouped as triplets.

b minor

The b minor natural scale is shown on a treble clef staff with a key signature of three sharps. It begins with a quarter note on B4, followed by eighth notes for C5, D5, E5, F5, G5, A5, and B5. The descending part starts with a quarter note on A4, followed by eighth notes for G4, F4, E4, D4, C4, B3, and A3. The final three notes (A3, G3, F3) are grouped as triplets.

c minor

The c minor natural scale is shown on a treble clef staff with a key signature of three flats. It begins with a quarter note on C4, followed by eighth notes for D4, E4, F4, G4, A4, B4, and C5. The descending part starts with a quarter note on B3, followed by eighth notes for A3, G3, F3, E3, D3, C3, and B2. The final three notes (B2, A2, G2) are grouped as triplets.

f# minor

The f# minor natural scale is shown on a treble clef staff with a key signature of four sharps. It begins with a quarter note on F#4, followed by eighth notes for G#4, A#4, B#4, C5, D5, E5, and F#5. The descending part starts with a quarter note on E4, followed by eighth notes for D4, C4, B3, A3, G3, F#3, and E3. The final three notes (E3, D3, C3) are grouped as triplets.

f minor

The f minor natural scale is shown on a treble clef staff with a key signature of four flats. It begins with a quarter note on F4, followed by eighth notes for G4, A4, B4, C5, D5, E5, and F5. The descending part starts with a quarter note on E4, followed by eighth notes for D4, C4, B3, A3, G3, F3, and E3. The final three notes (E3, D3, C3) are grouped as triplets.

c# minor

The c# minor natural scale is shown on a treble clef staff with a key signature of one sharp. It begins with a quarter note on C#4, followed by eighth notes for D#4, E#4, F#4, G#4, A#4, B#4, and C#5. The descending part starts with a quarter note on B#3, followed by eighth notes for A#3, G#3, F#3, E#3, D#3, C#3, and B#2. The final three notes (B#2, A#2, G#2) are grouped as triplets.

bb minor

The bb minor natural scale is shown on a treble clef staff with a key signature of five flats. It begins with a quarter note on Bb4, followed by eighth notes for Cb5, Db5, Eb5, Fb5, Gb5, Ab5, and Bb5. The descending part starts with a quarter note on Ab4, followed by eighth notes for Gb4, Fb4, Eb4, Db4, Cb4, Bb3, and Ab3. The final three notes (Ab3, Gb3, Fb3) are grouped as triplets.

g# minor

The g# minor natural scale is shown on a treble clef staff with a key signature of two sharps. It begins with a quarter note on G#4, followed by eighth notes for A#4, B#4, C5, D5, E5, F#5, and G#5. The descending part starts with a quarter note on F#4, followed by eighth notes for E#4, D#4, C#4, B#3, A#3, G#3, and F#3. The final three notes (F#3, E#3, D#3) are grouped as triplets.

d# minor

The d# minor natural scale is shown on a treble clef staff with a key signature of two sharps. It begins with a quarter note on D#4, followed by eighth notes for E#4, F#4, G#4, A#4, B#4, C5, and D#5. The descending part starts with a quarter note on C#4, followed by eighth notes for B#3, A#3, G#3, F#3, E#3, D#3, and C#3. The final three notes (C#3, B#2, A#2) are grouped as triplets.

HARMONIC MINOR SCALES

a minor

d minor

e minor

g minor

b minor

c minor

f# minor

f minor

c# minor

bb minor

g# minor

d# minor

MELODIC MINOR SCALES

a minor

d minor

e minor

g minor

b minor

c minor

f# minor

f minor

c# minor

b minor

g# minor

d# minor

MALLET PERCUSSION

NATURAL MINOR SCALES

a minor



d minor



e minor



g minor



b minor



c minor



f# minor



f minor



c# minor



b# minor



g# minor



d# minor



HARMONIC MINOR SCALES

a minor

d minor

e minor

g minor

b minor

c minor

f# minor

f minor

c# minor

bb minor

g# minor

d# minor

MELODIC MINOR SCALES

a minor

d minor

e minor

g minor

b minor

c minor

f# minor

f minor

c# minor

bb minor

g# minor

d# minor