

Open The Eyes Of My Heart

arr. D. Berry
Horn Chart by Jason Collier

♩ = 162

Trumpet in B♭ 1

Trumpet in B♭ 2

Trombone T.C.

Trombone

7

Tpt.

Tpt.

Tbn.

Tbn.

13

as if a gliss bewteen each note

Tpt.

Tpt.

Tbn.

Tbn.

as if a gliss bewteen each note

as if a gliss bewteen each note

as if a gliss bewteen each note

19

Tpt.

Tpt.

Tbn.

Tbn.

fp

fp

fp

fp

fp

26

Tpt.

Tpt.

Tbn.

Tbn.

32

Tpt.

Tpt.

Tbn.

Tbn.

fp

fp

fp

fp

Open The Eyes Of My Heart

Trumpet in B \flat 1

arr. D. Berry
Horn Chart by Jason Collier

$\text{♩} = 162$

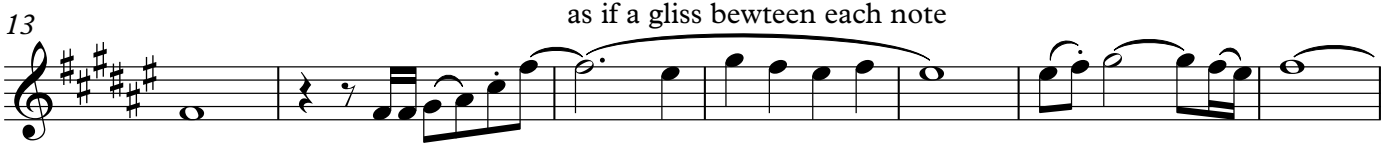


5



13


as if a gliss bewteen each note



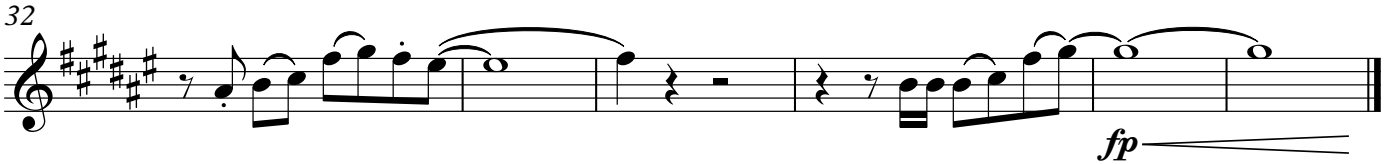
20



26



32

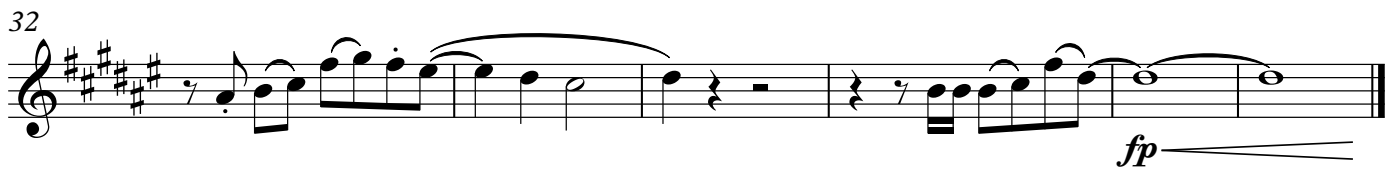
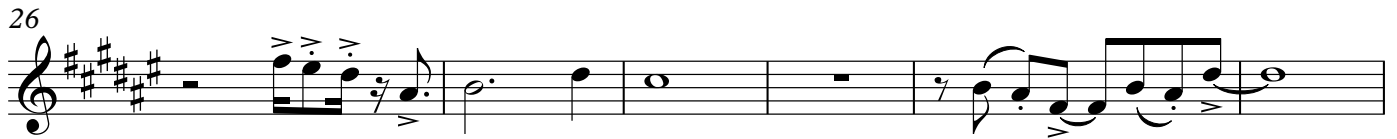
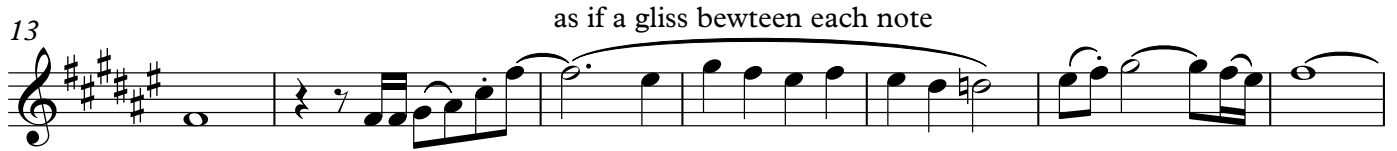


Open The Eyes Of My Heart

Trumpet in B \flat 2

arr. D. Berry
Horn Chart by Jason Collier

$\text{♩} = 162$



Trombone T.C.

Open The Eyes Of My Heart

arr. D. Berry
Horn Chart by Jason Collier

♩ = 162

5

13

as if a gliss between each note

20

26

32

Trombone

Open The Eyes Of My Heart

arr. D. Berry

Horn Chart by Jason Collier

♩ = 162

5

13

as if a gliss between each note

19

26

fp

32

fp

Open The Eyes Of My Heart

arr. Steve Kellner

Verse

(Tacet 1x)

Musical notation for the Verse section, measures 1-8. The key signature is three sharps (F#, C#, G#) and the time signature is 4/4. The music begins with a rest for the first measure, followed by a series of notes with slurs and accents. The dynamic marking *mf* is present. Measure 8 ends with a double bar line and a repeat sign.

Musical notation for the Chorus section, measures 16-20. The key signature is three sharps and the time signature is 4/4. The music starts with a rest and a dynamic marking of *f*. The word "Play" is written above the first measure. The section ends with a double bar line and a repeat sign.

Musical notation for the first ending and second ending, measures 21-24. The key signature is three sharps and the time signature is 4/4. The first ending (marked "1.") leads to a "D.S. al Fine" instruction. The second ending (marked "2. Chorus Repeat") repeats the chorus. The section ends with a double bar line and a repeat sign.

Musical notation for the third ending and fade out, measures 28-31. The key signature is three sharps and the time signature is 4/4. The third ending (marked "3. To Fade Outro") leads to a "Fade Outro" instruction. The section ends with a double bar line and a repeat sign.

Open The Eyes Open

arr. Steve Kellner

Verse

(Tacet 1x)

Musical notation for the Verse section, measures 1-6 and 7-13. The key signature is three sharps (F#, C#, G#) and the time signature is 4/4. The first six measures are marked with a 'Tacet' sign. The notation begins with a *mf* dynamic marking. The melody consists of eighth and quarter notes, with some notes beamed together and slurs indicating phrasing.

Musical notation for the Chorus section, measures 14-19. Measure 14 is marked with the instruction 'Play'. The section begins with a repeat sign. The dynamic marking *f* is present. The notation includes eighth notes, quarter notes, and a half note, with slurs and accents.

Musical notation for the first ending of the Chorus, measures 20-25. Measure 20 is marked with '1.'. The section concludes with the instruction 'D.S. al Fine'. The notation features eighth notes, quarter notes, and a half note with a slur.

Musical notation for the second ending and fade out, measures 26-31. Measure 26 is marked with '2. Chorus Repeat'. Measure 27 is marked with '3. To Fade Outro'. The section ends with the instruction 'Fade Outro'. The notation includes eighth notes, quarter notes, and a half note with a slur.

Open The Eyes Open

arr. Steve Kellner

Verse

(Tacet 1x)

Musical notation for the Verse section, measures 1-6 and 7-13. The key signature is three sharps (F#, C#, G#) and the time signature is 4/4. The first six measures are marked with a double bar line and a repeat sign, indicating a first ending. The dynamic marking *mf* is present. The notation includes quarter notes, eighth notes, and half notes, with slurs and ties.

Musical notation for the Chorus section, measures 14-19. The dynamic marking *f* is present. The notation includes quarter notes, eighth notes, and half notes, with slurs and ties. A 'Play' instruction is written above the staff.

Musical notation for the first ending of the Chorus, measures 20-25. The dynamic marking *f* is present. The notation includes quarter notes, eighth notes, and half notes, with slurs and ties. A first ending bracket is shown above the staff, with the instruction '1. D.S. al Fine' written to the right.

Musical notation for the second ending of the Chorus and the Fade Outro, measures 26-31. The dynamic marking *f* is present. The notation includes quarter notes, eighth notes, and half notes, with slurs and ties. A second ending bracket is shown above the staff, with the instruction '2. Chorus Repeat' written above it. A third ending bracket is shown above the staff, with the instruction '3. To Fade Outro' written above it. The section concludes with the instruction 'Fade Outro'.